

Adoption and Fostering | Child and Family | Immigration and Asylum | Personal Injury  
| Clinical Negligence | Occupational Psychology | Neuropsychology | Mental Capacity

## Personal Injury & Clinical Negligence

---

Specialists in providing psychological experts in all aspects of law



PSYCHOLOGY  
EXPERTS

# The nationwide directory for psychologist expert witnesses

We are a nationwide team of expert psychologists who are passionate about the work we do. Because we work exclusively in this field, we help you make the right decisions when instructing a specialist who has the specific skills your case demands. We are committed to providing objective, evidence-based assessments to support the decisions of the Courts.

We understand the diverse needs of individuals, children, parents, and offenders in proceedings, and consequently support you in providing the necessary expertise. A detailed knowledge of our experts' training and experience is crucial in order to establish the exact requirements of your case, as well as having a deep understanding of the psychological issues presented.

## Due Diligence

The quality of our work starts from the outset of the selection process. Each of our psychologists have been selected for their expertise in their respective fields of psychology.

All of our experts are:

- Professionals with at least 3 years post-qualification experience
- Registered with the Health Care Professionals Council (HCPC)
- Chartered with the British Psychological Society
- Criminal Record (DBS) checked
- Maintaining their professional CPD
- Regularly supervised and managed by senior psychologists

## Our Process

Whilst we maintain excellent relationships with our team, forward-thinking automated systems make our daily communications with them prompt and direct. We are able to inform you of expert timescales and availability within hours of your enquiry.

Our admin team are experienced in working with cases surrounding complex issues and sensitive information, managing your expert instruction throughout the process with utmost care and attention.

“Psychology Experts were extremely helpful and attentive to our needs, from dealing with our initial enquiry courteously to the prompt delivery of the final report. We would have no hesitation in returning to them for future expert instructions.”

- Solicitor,  
Crane and Staples Solicitors

## Our Team of Experts

Our ever-growing team spans the whole of the UK, with Clinical, Counselling, Educational, Occupational and Forensic Psychologists and Neuropsychologists in or near every major city in England. Our experts have diverse cultural experience and linguistic abilities. Our online directory gives detailed information on each expert including their areas of expertise and specialist training, which can be found quickly using our smart search tool. We believe in full transparency and therefore all expert CVs can also be downloaded in full so that you can carry out your own due diligence.



**Dr Marc Desautels**, CPsychol, CSci, AFBPsS  
Clinical Psychologist  
**Areas:** London and surrounding areas  
**Specialisms:** Adult Mental Health; Personality Disorder; Substance Misuse; Trauma and PTSD; Learning Difficulties; Mental Capacity; Forensic Risk; Sexual Risk; Domestic Abuse; Parenting Capacity



**Dr Nathan O'Neill**, B.Sc, MA, D.Clin.Psych  
Clinical Psychologist  
**Areas:** Glasgow and surrounding areas  
**Specialisms:** Adult Mental Health; Personality Disorder; Substance Misuse; Trauma and PTSD



**Dr Rebecca Clark-Dowd**, D.Clin.Psy, BA  
Clinical Psychologist  
**Areas:** North East England  
**Specialisms:** Adult Mental Health; Personality Disorder; Substance Misuse; Trauma and PTSD; Learning Difficulties; Mental Capacity; Forensic Risk; Domestic Abuse; Parenting Capacity; Physical Disability



**Dr Helen Nicholas**, PsychD, CPsychol, AFBPsS  
Counselling Psychologist  
**Areas:** South West  
**Specialisms:** Adult Mental Health; Personality Disorder



**Dr Lalitaa Suglani**, Couns.Psy.D, MSc.(Hons), BSc.(Hons)  
Counselling Psychologist  
**Areas:** Midlands  
**Specialisms:** Trauma and PTSD; Mental Capacity; Domestic Abuse; Youth Offending; Child Mental Health; Child Behaviour; School Problems; Parenting Capacity; Parent-Child Attachment



**Dr Paul Lewis**  
Clinical Psychologist  
**Areas:** London and surrounding areas  
**Specialisms:** Adult Mental Health; Trauma and PTSD



**Dr Karen Addy**, MSc, D.Clin.Psych, QCN, DipCAT, CPsychol, AFBPsS  
Clinical Psychologist and Neuropsychologist  
**Areas:** Bangor and North West  
**Specialisms:** Trauma and PTSD; Neuropsychological; Learning Difficulties; Mental Capacity; Physical Disability



**Dr Adam Jarvis**, B.Sc, D.Clin.Psych, CPsychol, AFBPsS  
Clinical Psychologist  
**Areas:** London and surrounding areas  
**Specialisms:** Adult Mental Health; Personality Disorder; Substance Misuse; Neuropsychological; Learning Difficulties; Mental Capacity; Sexual Risk; Domestic Abuse



**Dr Lisa Anderson**, BSc (Hons), MSc, PgDip, CPsychol, AFBPsS  
Clinical and Forensic Psychologist  
**Areas:** Midlands  
**Specialisms:** Adult Mental Health; Substance Misuse; Trauma and PTSD; Domestic Abuse; Youth Offending; Child Mental Health; Child Behaviour; School Problems; Parenting Capacity; Parent-Child Attachment



**Dr Leonie Campbell**, CPsychol, CSci, AFBPsS  
Counselling Psychologist  
**Areas:** London and surrounding areas  
**Specialisms:** Adult Mental Health; Personality Disorder; Substance Misuse; Trauma and PTSD; Neuropsychological; Learning Difficulties; Mental Capacity; Parenting Capacity; Relationships Difficulties



**Dr Adrian Hemmings**, B.Sc, MA, D.Phil  
Counselling Psychologist  
**Areas:** South East  
**Specialisms:** Adult Mental Health; Personality Disorder; Substance Misuse; Trauma and PTSD



**Dr Adrian McGrath**, Dip. CBT, BA, MSc, CPsychol, CSci, AFBPsS  
Forensic Psychologist  
**Areas:** North West  
**Specialisms:** Adult Mental Health; Mental Capacity



**Dr Keren Fisher**, BSc, MSc, Ph.D.  
Clinical Psychologist  
**Areas:** Bath and South West  
**Specialisms:** Adult Mental Health; Trauma and PTSD; Physical Disability



**Dr Vikki Hunkin**, D.Clin.Psych, CPsychol, PgDip, QCN  
Clinical Psychologist and Neuropsychologist  
**Areas:** South West  
**Specialisms:** Adult Mental Health; Trauma and PTSD; Neuropsychological; Learning Difficulties; Mental Capacity; Parenting Capacity



Search an extensive list of our experts at on the website

[www.psychologyexperts.org](http://www.psychologyexperts.org)

## Personal Injury

Personal injury needs to look beyond the immediate physical harm to the often chronic and debilitating psychological harm that can affect mental health, employment, relationships and parenting. The quality of psychological evidence relies on the objectivity of the expert drawing on multiple sources of information such as self-report, robust psychometric tests and medical records. Our expert psychologists have a wealth of expertise to locate the source of the presenting symptoms and make clear judgements about liability, treatment and prognosis.

## Clinical Negligence

Our panel of expert psychologists have an in-depth knowledge and wealth of experience working for both applicants and respondents in medical negligence cases.

## Clinical Neuropsychology

Our team of Clinical Neuropsychologists have a range of clinical specialisms that can enable them to differentiate between, for example, the neurological impact of brain injury and degenerative conditions such as dementia. Psychologists with the Qualification in Clinical Neuropsychology (QICN) are trained to the highest level in the field to make clear assessments of traumatic brain injury (TBI) and its consequences, such as coma. Clinical Neuropsychologists can also make subtle yet important differential diagnosis with other neurological conditions.

## Trauma and PTSD

Psychological trauma is the overwhelming experience of extreme events that exceed a person's ability to cope and integrate these experiences effectively. The skill in assessing trauma, is to find the key to change. This key can be found in people's unprocessed memories, dysfunctional thoughts or even in their social networks. Trauma is one of the most common effects of injury, with the impacts of the event often leading to further issues including potential employment and relationship difficulties.

Screening and assessing for trauma, especially with regard to ascertaining the extent to which trauma affects healthy functioning, are essential in determining the overall social and emotional health of the individual. A psychologist will take the individual's history into account to ensure a holistic, trauma-informed approach. Some presenting symptoms that a psychologist will be looking for when Post-Traumatic Stress Disorder is likely are: re-experiencing the trauma through intrusive recollections of the incident including nightmares or flashbacks; emotional numbness and avoidance of related stimuli; and significant impact on affect, including increased arousal, difficulty sleeping and concentrating and a tendency to become irritated or angered.

## Therapy and Rehabilitation

Chartered Psychologists are trained in diverse interventions for trauma, adjustment disorder, stress, and associated diagnoses. Our experts offer both short-term evidence-based interventions such as EMDR, trauma-focused CBT (TF-CBT), as well as longer-term interventions. Psychologists are also trained to evaluate the outcome of their intervention, providing clear outcome and prognosis reports at the end of each intervention.

It is also important for the expert to consider detrimental factors of psychological harm relating to home life, recreational and social situations which can accumulate, leading to more complex problems. Traumatic brain injury can cause long-term problems which can include physical symptoms (headaches, dizziness) and problems with cognition (memory impairment, concentration and problem solving). The risk of suicide in those with a history of traumatic brain injury (TBI) is elevated due to consequences such as these, with research suggesting suicide is twice as likely in those with brain injury than those without. Rehabilitation and emotional support are vital, as well as evaluating the enduring effects of the incident that relate to the claim.

## Employment Psychology

Psychology Experts are able to offer comprehensive reports on employment problems including stress related disorders, discrimination or sexual harassment, and work related accidents.

We are also able to offer return to work interventions where appropriate, to help employees back to work as quickly as possible.

## Return to work

The expert will report on the client's current psychological state as well as making predictions about their ability to cope with work expectations in the future, basing these predictions on the individual's capacity for coping and adjusting, the impact or interaction of any psychological diagnoses and the potential effectiveness of any treatment. The expert will make a professional judgement on whether the individual has effective coping mechanisms in place to deal with the physical and psychological pressures of their work, as well as whether they will be able to carry out their work to the standard expected.

“ From the time I instructed to the time that the expert assessed my client and provided the report was very quick and efficient. The report was clear, concise and extremely helpful and I will recommend this service in the future. ”

## Personal Injury Assessments

### Online Screening Assessments

Online one-hour triage assessments making clear recommendations for treatment and case management.

### Diagnostic Assessments

A diagnostic assessment is indicated where you require a clear understanding of the psychological disorder that the individual is suffering.

### Complex Diagnostic Assessments

Complex assessments are normally indicated in high-cost court cases where evidence has been contested or when an individual presents with multiple diagnoses.

### Specialist Neuropsychological Assessments

Our consultant clinical psychologists have received the Qualification in Clinical Neuropsychology (QICN), the hallmark of excellence in neuropsychology. Collectively we have a vast experience in assessing all areas of psychological injury.

Email [admin@psychologyexperts.org](mailto:admin@psychologyexperts.org) for an up-to-date list of fees.

## Service and Payment Terms

We provide full administrative support for each of our psychologists to ensure that appointments are booked, reports are quality checked and deadlines are met.

We ensure clear communication about costs and timescales, ensuring that experts meet set deadlines.

We have standard payment terms of 30 days but also offer deferred payment until conclusion of the case.

We offer a clear complaints procedure and provide a Mediation and Resolution Service in the unlikely event that any assessments do not meet the needs of the court, client expectations or professional standards.

## Contracts

Whether a national law firm or sole trader, we are able to fulfil regular referrals, accommodating the type of cases you receive and how they are funded.

We are flexible in the way we integrate with your existing procedures through our adaptable case management system, meaning we can offer quick and consistent results. To aid communication, a dedicated case manager will be on-hand throughout every case.

Speak to us about your requirements so we can arrange the most suitable arrangement for your firm.

## Contact

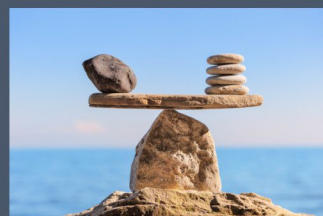
Email: [admin@psychologyexperts.org](mailto:admin@psychologyexperts.org)

Tel: 01273 381 468

Web: [www.psychologyexperts.org](http://www.psychologyexperts.org)



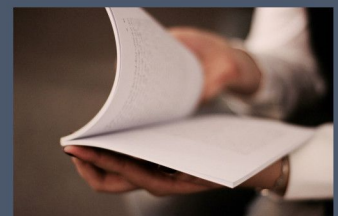
Child and Family Law



Adoption and Foster Care



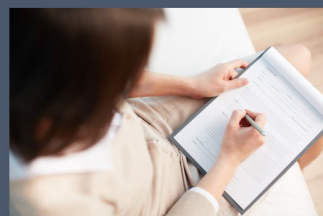
Civil Law



Criminal Law



Therapy and Rehabilitation



Employment Law



Educational Psychology



Immigration and Asylum